

MAP EXPLANATION

- Paved Gravel Unimproved
- Federal and State Highways
- County and Municipal Roads
- U. S. Highway Marker
- State Highway Marker
- State Parks
- Municipal Parks
- Game and Forest Reserve Boundaries

Map of OGEMAW COUNTY MICHIGAN

OGEMAW COUNTY ROAD COMMISSION

MART BROCK, Chairman, Alger

JOSEPH WANGLER, West Branch

STEWART MONTGOMERY, Rose City

W. T. MCKENNEY, Supt. and Eng., West Branch

Scale in Miles
TO MJO

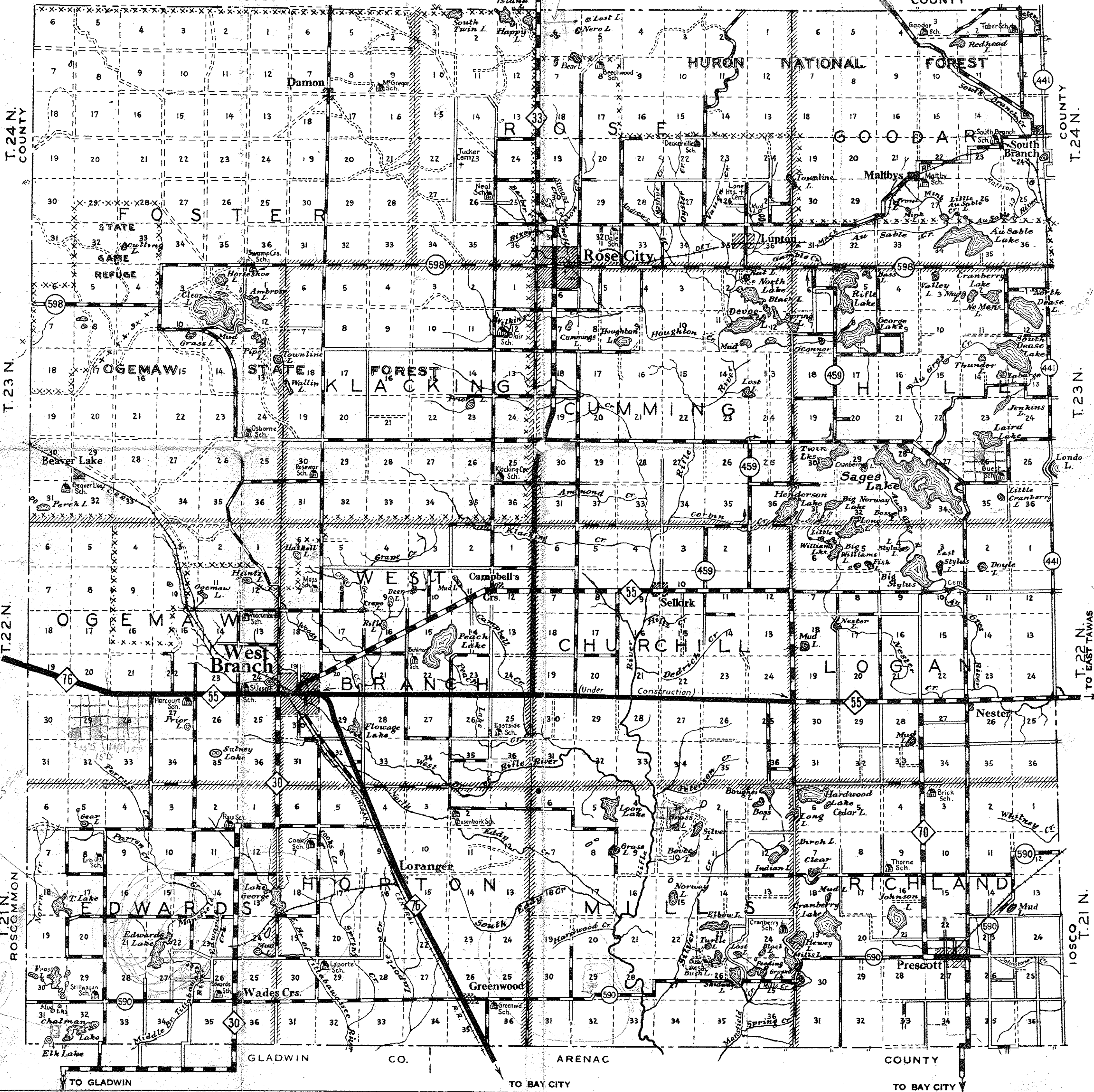
Drawn and compiled by W. S. McAlpine Map Co.,
Birmingham, Michigan;
From authentic State, Federal, and County Surveys
Copyright 1939 by W. S. McAlpine Map Co.

R. 1 E.
OSCODA

R. 2 E.

R. 3 E.

R. 4 E.
COUNTY



TO HOUGHTON LAKE
T. 22 N.

TO EAST TAWAS
T. 22 N.

TO GLADWIN
T. 21 N.
ROSCOMMON

TO BAY CITY
T. 21 N.
OSCODA

TO BAY CITY

TO BAY CITY

OGEMAW COUNTY

MICHIGAN

1939 E. R. WILSON

OGEMAW COUNTY



HUB OF THE GREAT
NORTHEASTERN MICHIGAN
RESORT REGION



E. R. WILSON

Issued by
OGEMAW COUNTY ROAD COMMISSION,
BOARD OF SUPERVISORS,
OGEMAW COUNTY TOURIST and
SPORTSMAN'S ASSOCIATION



Everyone happy in deer season

WEST BRANCH—West Branch, the county seat, located on highways M-55, M-76, M-30, and M-33, and the Michigan Central Railroad, is on the most direct Mackinaw route. The city nestles in the Hills of Ogemaw and along the banks of the west branch of the Rifle River, within its limits is located the "Old Mill Pond" where brook and German Brown trout abound and are planted yearly to test the fly fisherman's skill. West Branch, a community of opportunity, is surrounded by a thriving farming district, interspersed by a large number of oil wells that add to the economic value of the area. Modern schools are maintained and churches of various denominations are represented. West Branch is especially noted for its pure water, its up-to-date merchants, its tourist park, and accommodations for tourists, visitors and sportsmen.

ROSE CITY—Located on M-33 in the heart of the hunting and fishing area. The partridge festival is held here yearly and attended by sports lovers from all over the United States. It is three miles from the world famous Jewett Bird Sanctuary and located near the Huron National Forest. Eight miles west of Rose City lies the Ogemaw Game Refuge where one can see and feed the wild deer. Rose City is famous for its artesian wells and the famous Houghton Trout Stream.

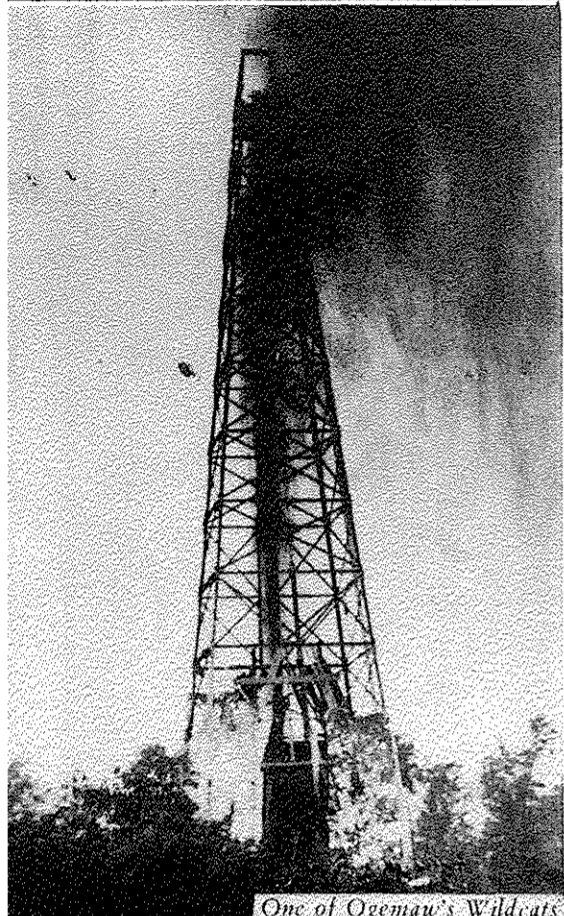
PRESCOTT—Prescott, a thriving village of Richland Township, lies just east of the chain of lakes in the southeastern part of Ogemaw County. In this area, bird hunting can be found at its best and deer are becoming more plentiful each year. Adjacent lakes offer the best of fishing. The Prescott Farms have been the scene of the field trials of the Saginaw Field and Stream Club.

LUPTON—Located on the head waters of the Rifle River and adjacent to the Andrews, Mayhew, Oyster, Vaughn and Gamble trout streams. The area is reminiscent of the old lumbering days and many pleasant hours can be spent on the excellent lakes and streams to be found in this area.

SOUTH BRANCH—Founded on the south branch of the world-famous AuSable River. Formerly known as an old lumbering center and now known as a famous hunters' paradise, it is still in the native state where one can "rough-it" to his heart's content. Wildcats, deer, rabbits, fox and bear can always be found, together with good fishing.

SELKIRK—On the Rifle River, where one can place his boat in the water and float many miles down a beautiful stream to enjoy hunting and fishing—a cameraman's paradise on a river with "a view."

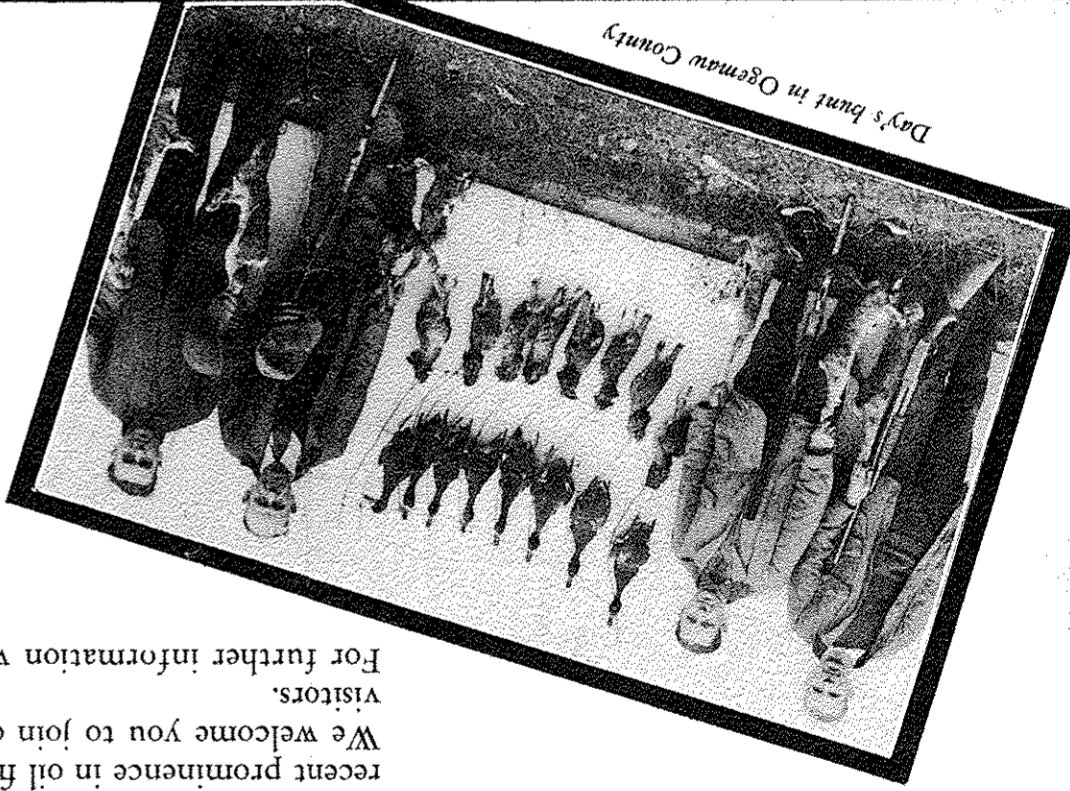
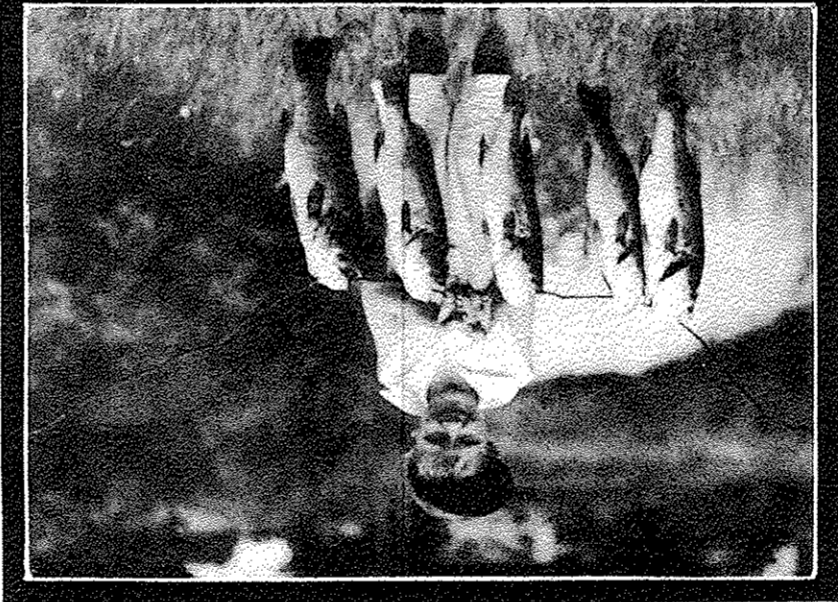
DAMON—The lost city, immortalized in James Oliver Curwood's "Green Timber." On scenic route leading from West Branch over old lumber trails and through areas recalling memories of a by-gone gigantic lumbering industry.



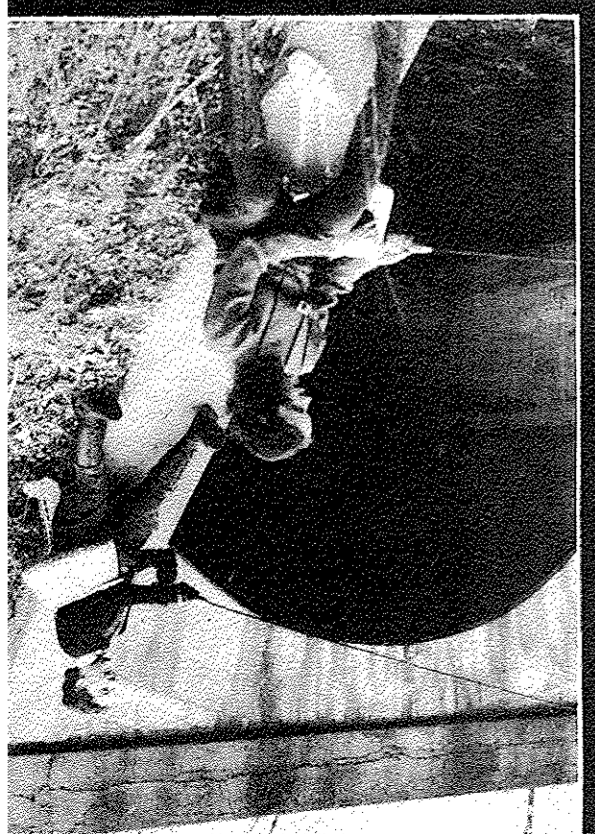
One of Ogemaw's Wildcats



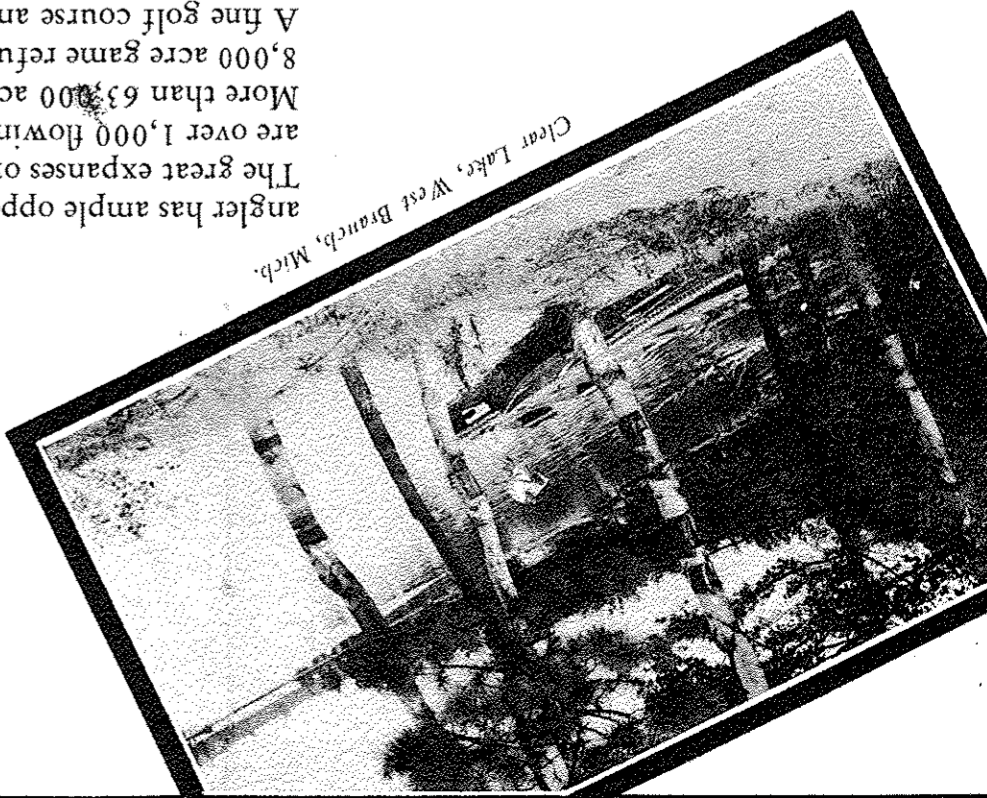
Paul Bunyan's Buck Board



Day's hunt in Ogemaw County



Near the Old Mill Pond



Clear Lake, West Branch, Mich.

The all-year Sportsmen's Paradise within three hours' ride from Detroit. Enjoy the aroma of the Pines by traveling over the old logging trails dedicated to the late Earl Starnard who, by his tireless efforts, bushed and mapped out these trails. We have over one hundred lakes, well known for duck hunting, fishing, boating and bathing, among which are Sages, Clear, Peach, George, Rifle, Henderson, Skidway and T lakes. There are many miles of nationally known Trout streams which are tributaries of the famous Rifle River. Our lakes and streams are constantly stocked by both State and National Agencies, so the angler has ample opportunity to catch the limit. The great expanses of forest abound in deer, rabbit, ruffed grouse, bear, fox, wild-cat, and non-game bird life. There are over 1,000 flowing springs and 3,000 Artesian wells in our County. More than 63,000 acres of state and national forest lie within the county—open to the public. In addition there is an 8,000 acre game refuge. The nightly feeding of the deer at the Ogemaw County Game Refuge interests many tourists. A fine golf course and skeet club is located at West Branch and is one of the finest in the state. Not only does Ogemaw County boast exceptional vacation attractions but the county has many fine farms and is of recent prominence in oil field development. We welcome you to join our Ogemaw County Tourist and Sportsmen's Association. No charge to out of state visitors. For further information write our County Clerk at West Branch.

NESTLED IN THE OGEMAW HILLS
OGEMAW COUNTY